

# QUIET OASIS

QUIET OASIS TRADING ESTABLISHMENT

P.O. BOX 79204  
AL-KHOBAR

ataboog\_qote@yahoo.com

Kingdom Of Saudi Arabia

## THESE ARE THE CLASSIFICATIONS OF OUR SUPPLY

---

Electromechanical

Explosion Proof Boxes

Exothermic Welding

Pipeline & Railway

Communication

Fiber Optics & Patch Panels

Overhead Transmission Pole  
Hardware

Substation

Earthing, grounding &  
lighting

Cable Management

Instrumentation

Tools & Hardware

Safety Equipment

For Factories & Projects

*Quiet Oasis*

# SAMPLE PRODUCT LIST

## EMT CONDUITS & FITTINGS

EMT CONDUITS

EMT COMPRESSION FITTINGS

EMT SET SCREW FITTINGS

EMT CLIPS 1 HOLE

EMT RAISED COVERS

EMT BLANK COVERS

EMT HANDY BOXES

EMT JUNCTION BOXES

EMT PULL BOXES GREY NEMA 1

EMT PULL BOXES GREY NEMA 3R

EMT OFFSET NIPPLES

EMT BUSHINGS (INSULATED, GROUNDED)

EMT LOCKNUTS

EMT REDUCER WASHERS

EMT KNOCKOUT SEALS

EMT CONDULETS (LB, LR, LL TEE, CEE, ETC)

EMT COMBINATION COUPLING

EMT COMBINATION CONNECTOR

EMT MYERS HUB

EMT ELECTROLINE HUBS

EMT CORROGATED WASHERS

EMT SERVICE ENTRANCE CAPS

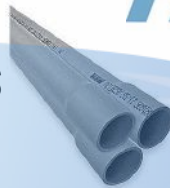


# CABLE MANAGEMENT SYSTEMS

- WEATHER PROOF CONDUITS
- WEATHER PROOF CONNECTOR STRAIGHTS
- WEATHER PROOF CONNECTOR ANGLE 45 DEG.
- WEATHER PROOF CONNECTOR ANGLE 90 DEG.
- WEATHER PROOF BOXES
- WEATHER PROOF COVERS
- RGS WEATHER PROOF CONNECTOR STRAIGHT
- RGS WEATHER PROOF CONNECTOR 45 DEG.
- RGS WEATHER PROOF CONNECTOR 90 DEG.
- FLEXIBLE STEEL CONDUITS
- FLEXIBLE CONNECTOR STRAIGHT
- FLEXIBLE CONNECTOR 90 DEG.
- FLEXIBLE COUPLING
- FLEXIBLE CONNECTOR 90 DEG. RIGID
- PVC CONDUITS
- PVC CLIPS
- PVC BELLS ENDS
- PVC ELBOW
- PVC COUPLINGS
- PVC ADAPTERS MALE & FEMALE
- PVC ELBOW 45 DEG.
- PVC JUNCTION BOX
- PVC STRAPS
- PVC SPACERS



**Thomas & Betts**





# Quiet Basis

**UNISTRUT CHANNEL** Slotted, Plain, Galvanized, Hot Dip Galvanized,  
and according to requirement

**CABLE TRUNKINGS**

**CABLE TRUNK COVERS**

**CABLE TRUNK ACCESSORIES** - Elbow, Tee, Coupling, etc

**CABLE TRAYS**

**CABLE TRAY ACCESSORIES** - Elbow, Tee, Coupling, etc

**UNISTRUT CHANNEL CLAMPS**

**THREADED RODS**

**HEX NUTS**

**SPRING WASHERS**

**SQUARE WASHERS & SPRING NUTS**

**BEAM CLAMPS**

# COOPER



# RGS CONDUITS AND ACCESSORIES

- RGS CONDUITS
- RGS COUPLING
- RGS ELBOWS
- RGS UNION
- RGS UBC CLAMPS
- RGS UPC CLAMPS
- RGS STRAPS
- RGS SPACERS
- RGS BEAM CLAMPS
- RGS EDGE CLAMPS
- RGS TRAY CLAMP
- RGS REDUCER BUSHES
- RGS REDUCER BUSHES COUPLING TYPE
- RGS PLUGS SQUARE HEAD
- RGS PLUGS RECESSED TYPE
- DRAINS & BREATHERS
- RGS CLOSE NIPPLES
- RGS THREAD-LESS COUPLINGS
- RGS THREAD-LESS CONNECTORS
- RGS HUBS
- RGS BUSHES
- RGS LOCKNUTS
- RGS SEAL LOCKNUTS
- RGS CAPPED ELBOWS
- RGS SHORT ELBOWS
- RGS SPLIT COUPLINGS
- RGS THREE PIECE COUPLING
- RGS CORNER ELBOWS
- RGS DEVICE BOXES
- RGS BOX COVERS & GASKETS



# Quiet Basis

**RGS SEALING FITTINGS**  
**RGS CONDUIT OUTLET BOXES**  
**RGS & RUBBER EXPANSION FITTINGS**  
**RGS P, ELBOW LBH & LBD**  
**COPPER FLEXIBLE COUPLINGS**  
**RGS STRAIN RELIEF CONNECTORS**  
**RGS HAZARD BOXES**  
**HAZARDOUS LIGHTING FITTINGS**

*\*Above Rgs Materials Are Also Available With PVC Coating*



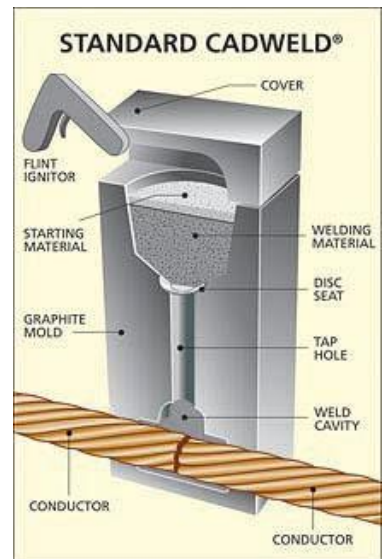


# WELDING ACCESSORIES

- MINI MOLDS
- MOLDS
- HANDLE FOR MOLDS
- IGNITER GUN
- THERMITE POWDER
- CLEANING STEEL BRUSHES
- CLEANING SPOON
- MOLD KIT

**thermOweld**

**Furseweld**

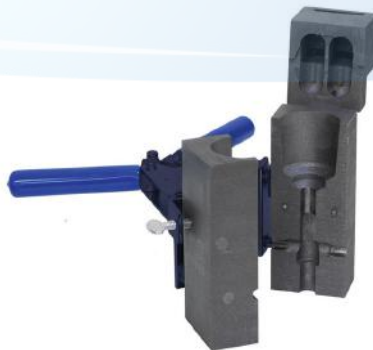


**ERICO**

**WALLIS**



**CADWELD**



# EARTHING & GROUNDING SYSTEMS

- GROUND RODS
- GROUND CLAMPS
- COPPER SPLIT BOLTS
- COPPER SERVIT POSTS
- GROUND CLAMP U-BOLT
- GROUNDING CLIPS
- COPPER TAPES
- SURGE ARRESTERS
- GROUNDING PITCHES
- COPPER C-CLAMPS
- COPPER BUSBARS
- COPPER GLANDS
- GLANDS S.S. & CHROME PLATED
- COPPER CLIPS



**Blackburn**

**Furseweld**

**Thomas & Betts**

**ERICO**

**furse**

**BURNDY**



Thomas & Betts



# MEDIUM & HIGH TENSION MATERIALS

- WOODEN POLES
- FIBER GLASS POLES
- CROSS STEEL ARMS
- WASHERS
- STUD ASSEMBLY THREADED BOLT ASSEMBLY
- BRACKET POST INSULATORS
- BRACKET TOP MOUNTING
- SPACER CABLE
- ROD ARMOUR
- TERMINAL CONNECTORS
- GROUND RODS
- GROUND ELECTRICAL CONNECTORS
- LINK EXTENTIONS
- SLEEVE CONNECTORS
- STUD LONG POST INSULATORS
- NUT EYE
- BRACE POLE CROSS ARM
- DOUBLE ARMING BOLT
- BRACKET MOUNTING ARM ANGLE
- MOLDING GROUND WIRE
- CONNECTOR TERMINAL BI METTALIC
- GUY WIRES
- DEAD END GRIP
- CLIVE INSULATOR
- GUY STRAIN INSULATOR
- GROUND GUY WIRE
- POST INSULATOR
- SURGE PROTECTORS
- SURGE ARRESTERS



# Quiet Basis

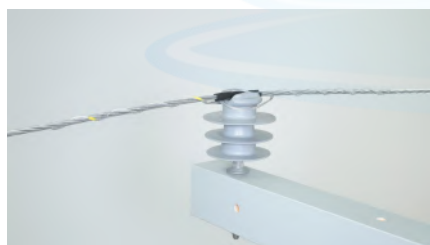
- FUSE CUTOUT
- FUSE LINKS
- LOAD BREAK DISCONNECT SWITCH
- THIMBLE CLIVE
- HOT LINE CLAMP STIRRUP
- DISTRIBUTION TIE
- TENSION CLAMP
- SERIES CLAMP
- ANCHOR RODS
- THREADED FORGED EYE



## CHANCE



PREFORMED  
LINE PRODUCTS





*Quiet Basis*

# POWER DISTRIBUTION SYSTEMS

PANEL BOARDS  
CONTROL SWITCHES  
ALL TYPES OF DISCONNECT SWITCHES  
CIRCUIT BREAKERS WITH ENCLOSURES  
LIGHTNING CONTACTORS  
INDOOR & OUTDOOR LIGHTING FIXTURES  
RECESSED LIGHTINGS  
HAZARDOUS AREA LIGHTINGS  
INDUSTRIAL LIGHTINGS  
ALL TYPES OF TRANSFORMERS  
ALL TYPES OF LIGHTING BALLASTS  
ALL TYPES OF LAMPS & TUBES  
WIRING DEVICES  
DEVICES HOSPITAL GRADES  
PLUGS & SOCKETS



by Schneider Electric





*Quiet Basis*

# CABLE ACCESSORIES ELECTRICAL & TELEPHONE

CABLE TIES  
WIRE NUTS  
WIRE PULLING COMPOUND  
WIRE TERMINAL  
TERMINAL LUGS  
WARNING TAPES  
WIRE MARKERS  
MECHANICAL LUGS  
SOLDERLESS LUGS  
PVC JUNCTION BOXES  
PVC INSULATION TAPES  
DUCT SEAL  
TERMINAL BLOCK PVC  
TERMINAL BAKELITE  
TERMINAL PUNCH TYPE  
HEAT SHRINK TUBES  
HEAT PROOF SLEEVES  
TERMINAL BLOCKS  
TERMINAL RAILS  
PVC TRUNKINGS  
PVC GLANDS  
PVC LOCKNUTS



**BAND-IT**  
THE CLAMPING EXPERTS

**3M**

CAUTION  
GAS LINE BELT

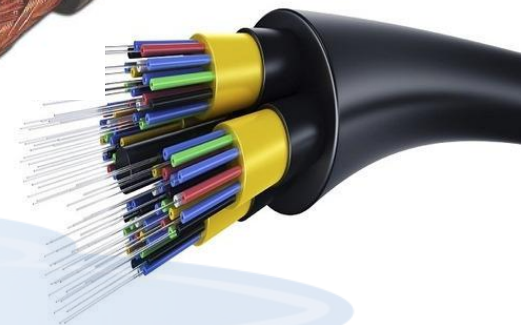


**Ty-Rap**<sup>®</sup>

*Quiet Basis*


# WIRE & CABLES ELECTRICAL & TELEPHONE

BUILDING WIRES  
TELEPHONE WIRES  
COMMUNICATION WIRES  
FIBRE OPTIC CABLES  
DATA CABLES  
RUBBER CABLES  
JUMPER CABLES  
CO-AXIAL CABLES  
PVC FLEXIBLE CABLES  
HEAT PROOF WIRES  
ACSR CABLES  
GUY WIRES



# Q.O.T.E

is pleased to inform about our new stock for the following materials.

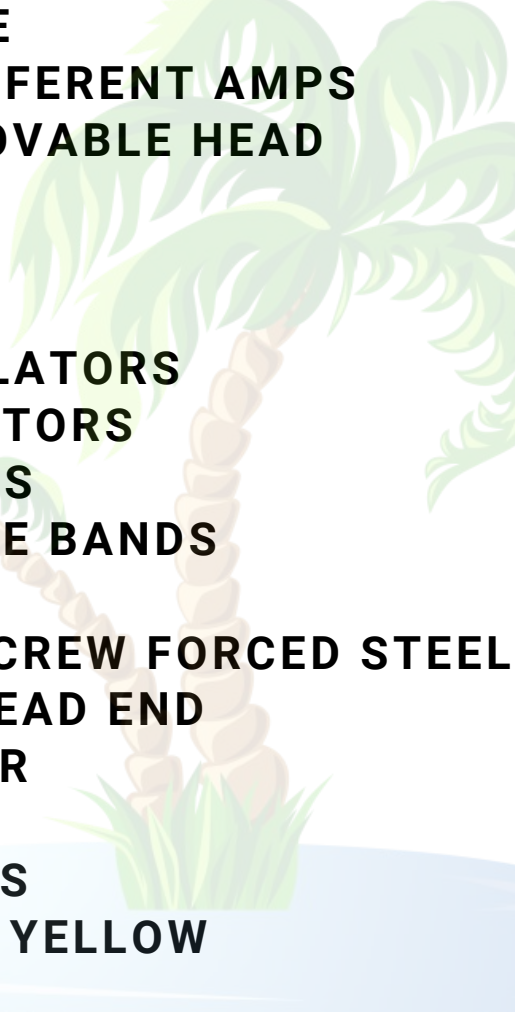


**MACHINE BOLT SQUARE HEAD  
MACHINE BOLT HEX HEAD  
DOUBLE ARMING BOLT  
SPRING WASHER  
SHORT STUD BOLT  
CURVE SQUARE NUT  
CLEVIS THIMBLE  
EYE BOLT OVAL  
GROUNDING BONDING STRAP  
EXPANDING ANCHOR  
ANCHOR RODS ALL TYPES  
ENTRANCE CAP  
BRACE CROSS ARM ANGLE  
POLE BRACKET  
CUT OUT AND ARRESTER BRACKET  
CLEVIS EYE EXTENSION  
TENSION CLAMP  
CROSS ARM MOUNTING BRACKET  
POLE MOUNTING BRACKET  
INSULATOR BRACKET  
PULLEY SPACER BRACKET  
BRASS TAG  
CURVE WASHER  
PLATE POLE GUY**



# *Quiet Basis*

**STEEL CROSS ARM  
WOOD CROSS ARM  
STRIP HOLDER FOR CONDUIT  
BRACKET POST INSULATOR  
CLAMP TURN UNION VERTICAL  
CROSS ARM MTG BRACKET  
HY TAP CONNECTOR CRIMPING  
HY TAP CONNECTOR BOLTED  
HOTLINE CLAMP ALL SIZES  
STIRRUP HOTLINE  
CUTOUT FUSE DIFFERENT AMPS  
FUSE LINKS REMOVABLE HEAD  
TOP TIE  
SIDE TIE  
DEAD END GRIPS  
PORCELAIN INSULATORS  
POLYMER INSULATORS  
SURGE ARRESTERS  
POLE ADJUSTABLE BANDS  
SOCKET EYE  
SHACKEL WITH SCREW FORCED STEEL  
STRAIN CLAMP DEAD END  
SPOOL INSULATOR  
SPOOL RACK  
DIST. INSULATORS  
GUY GUARD WIRE YELLOW  
GUY WIRE  
ACSR WIRE ALM  
BALL CLEVIS  
RACHYEM TUBES  
SPLICING KITS  
LOAD SWITCH BREAK**



# Quiet Basis

